



ELIF

Territorial Development Thematic Community

Serafin Pazos-Vidal (Senior Expert, Rural and Territorial
Development)

24 November 2022



Why territorial development for local innovation?

- ▶ To tap into the potential of **local** communities in providing **innovative responses** to present-day challenges and opportunities as they are key partners in the development of the European project;
- ▶ To boost innovation in Europe for the benefit of local citizens and to contribute to the **sustainable development** of local communities.

What is local innovation?

- ▶ It is not just technology
- ▶ It is about doing things differently
- ▶ It is about processes, governance, social capital...and results



What is territorial innovation for you?

Ask openly questions, clarification doubts.

Purpose of this meeting

In this thematic community, we aim to:

- ▶ Enhance **networking** at a pan-European scale connecting stakeholders and communities involved in **place-based** territorial innovation;
- ▶ Facilitate **peer-learning** by creating spaces for dialogue, exchange and debate of local experiences;
- ▶ Raise the importance of enabling **local innovation** through place-based territorial development within the EU policy agenda;
- ▶ Explore new ways to fully maximise the potential of existing EU instruments **supporting territorial development** (CLLD, ITI, Smart villages, etc.) analyse new territorial development models that support local innovation (**EU & non EU**).

How?

Informal

Voluntary

Online

Future-facing
(incl. post
2027)

Your participation is key! Ask openly questions, clarification doubts.

Community-led innovation ?

- ▶ It is about local people **taking stock of local assets**, drawing on the best available knowledge and taking the initiative to solve emerging challenges and seize opportunities for their area.
- ▶ It is about a **place-based approach** to achieve incremental innovation in all territories of the EU.
- ▶ It is a key way to **enhance democracy** at the local level and reconnect with the EU, making Europe closer to citizens.



Do you agree with this definition?

Ask openly questions, clarification doubts.

The state of territorial development today

Integrated Territorial Development is taking place across Europe (EU and non-EU funded):



351

ITI



795/2782

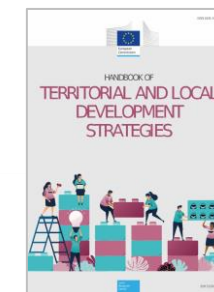
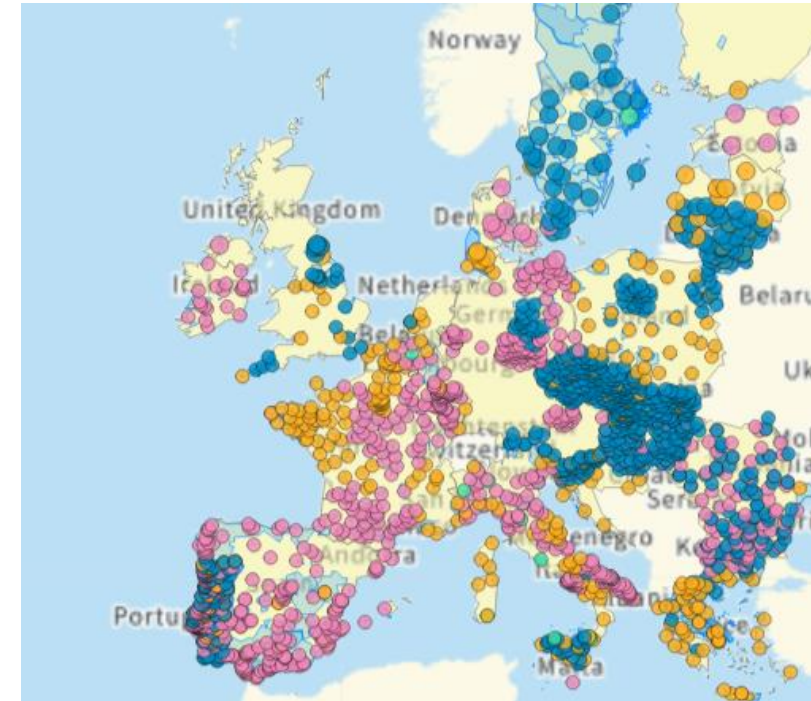
Multi-fund CLLD



100's

Non-EU funded local innovation

(community-led decision making, sub municipal and intermunicipal partnerships, etc.)



HOWEVER...

- ▶ EU funds & rules, heavy costs vs. tangible results
- ▶ Innovation is not main focus
- ▶ Insufficient representation & ownership
- ▶ Excessive involvement of national/regional authorities

BUT...

- ▶ There is a wealth of good practice across Europe which is not shared
- ▶ There is scope to reproduce and coproduce solutions at a pan-European scale



**Do you agree?
Your participation is
key!**

Ask openly questions,
clarification doubts.

Key questions for today

- ▶ What are the **key challenges** in implementing existing Territorial development instruments to support local development? **What is your experience** in your case/country or region?
- ▶ What do you think are the key **enabling factors (and barriers)** for local innovation?
- ▶ How do you think an informal, online and Pan-European network such as **ELIF** could help share and transfer knowledge of innovative, community-led territorial development?



Now is your turn!
What do you think?

Ask openly questions,
clarification doubts.

Thank you!



www.aeidl.eu



[@AEIDL.asbl](https://www.facebook.com/AEIDL.asbl)



[@AEIDL](https://twitter.com/AEIDL)



[/aeidl-european-association-for-information-on-local-development/](https://www.linkedin.com/company/aeidl-european-association-for-information-on-local-development/)